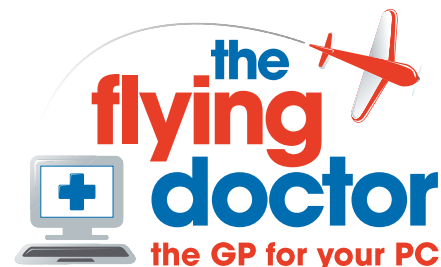


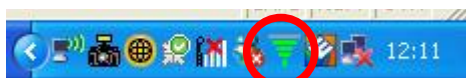
Resetting wireless network connection with BT connection manager



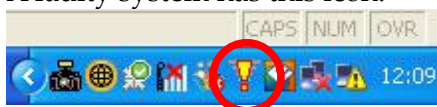
1. Identify that the network is not connecting

Look at the system tray (near where the clock is) and check the BT wireless icon.

A properly connected network has this icon:



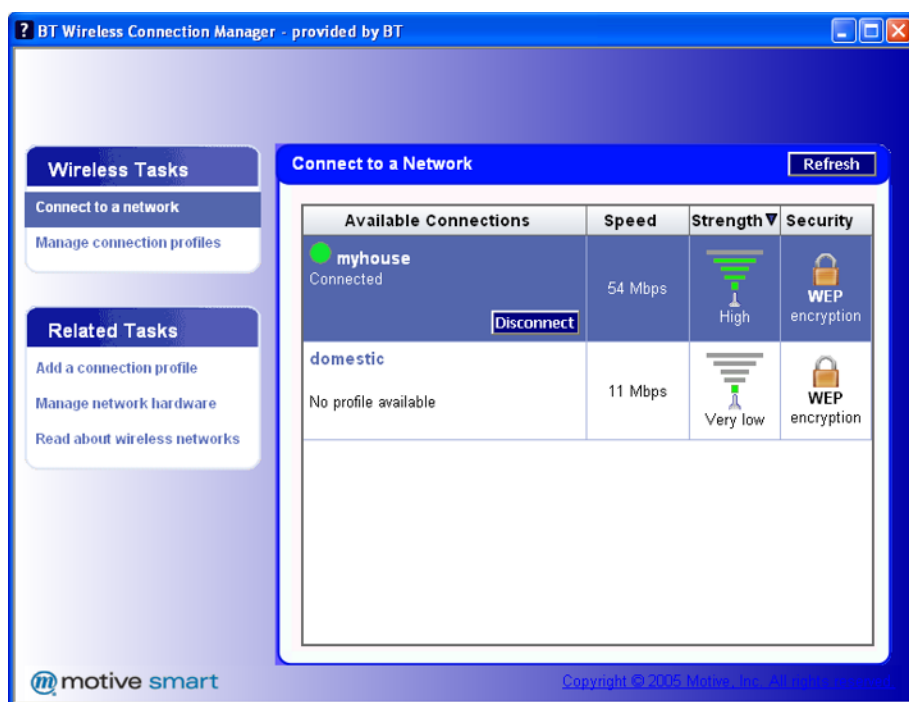
A faulty system has this icon:



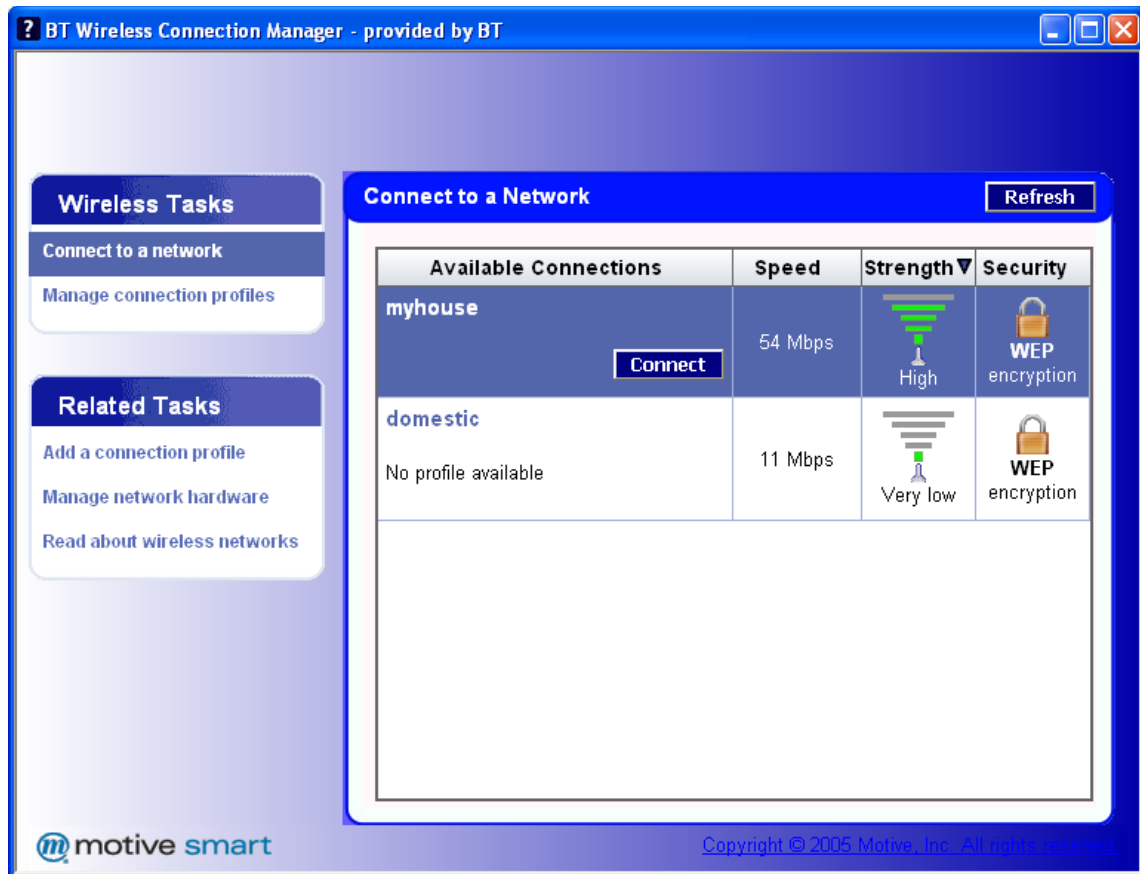
2. Remake the connection

Double click the yellow exclamation mark above to open the BT wireless connection manager window. It will search for networks for a few moments and then present the screen below. It looks as if the network is connected successfully, but it's not.

Click the **disconnect** button on the highlighted network



Highlight the required network and click **connect**.



Confirm that the icon now looks like



You are now connected and can close the BT Connection manager

